

Ft. Tuthill Bike Park

design proposal

What is this?



- A bicycle skills park is specially designed to provide riders a place to practice skills, learn to jump, have fun on mountain bikes, and watch and encourage each other

What is this?



- A skills park usually consists of a jump area, a pump track, and a skills development area focused on balance
- The jumps and pump track are dirt, and the skills area is made up of logs, rocks, and ladder bridges in a variety of configurations
- All features are designed to be progressively difficult, with options for beginners, intermediates, and experts

Video Example

Why do we need it?

- Flagstaff already has a large mountain biking population; yet there are no facilities to practice skills or jumps
- The USFS has encouraged FBO to pursue legal recreation opportunities of this type, in order to mitigate illegal use
- There are many kids in Flagstaff who would benefit from this type of outdoor recreation opportunity



Why do we need it?

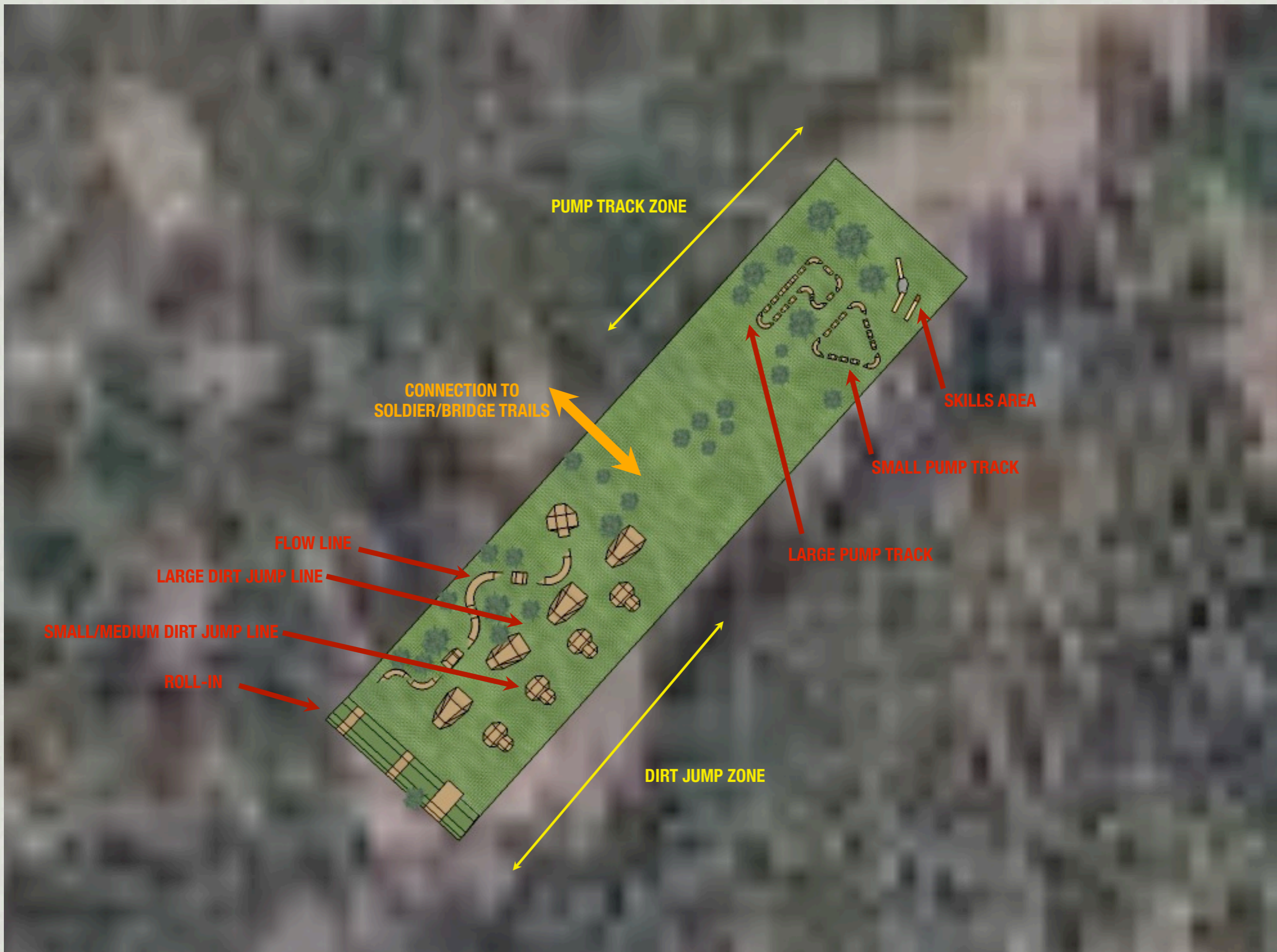
- Many illegal jumps and stunts are springing up all over the city and the forest
- Illegally built stunts are dangerous, unstable, and not nearly as much fun as well-constructed ones





Google

Imagery ©2010 DigitalGlobe, GeoEye, USDA Farm Service Agency - [Terms of Use](#)



PUMP TRACK ZONE

SKILLS AREA

SMALL PUMP TRACK

LARGE PUMP TRACK

**CONNECTION TO
SOLDIER/BRIDGE TRAILS**

FLOW LINE

LARGE DIRT JUMP LINE

SMALL/MEDIUM DIRT JUMP LINE

ROLL-IN

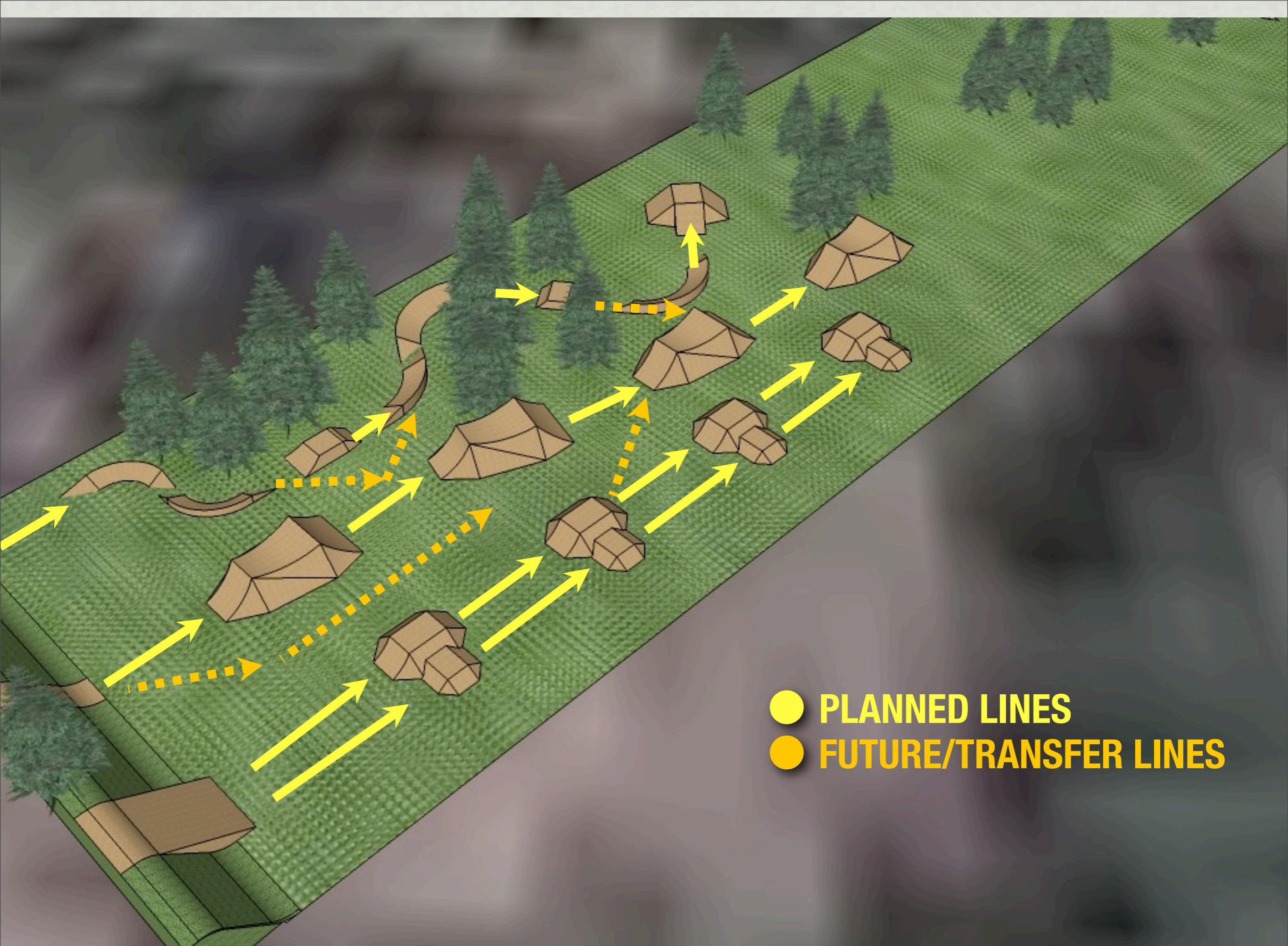
DIRT JUMP ZONE



Large jumps:
15' x 7'
radiused lip and landing

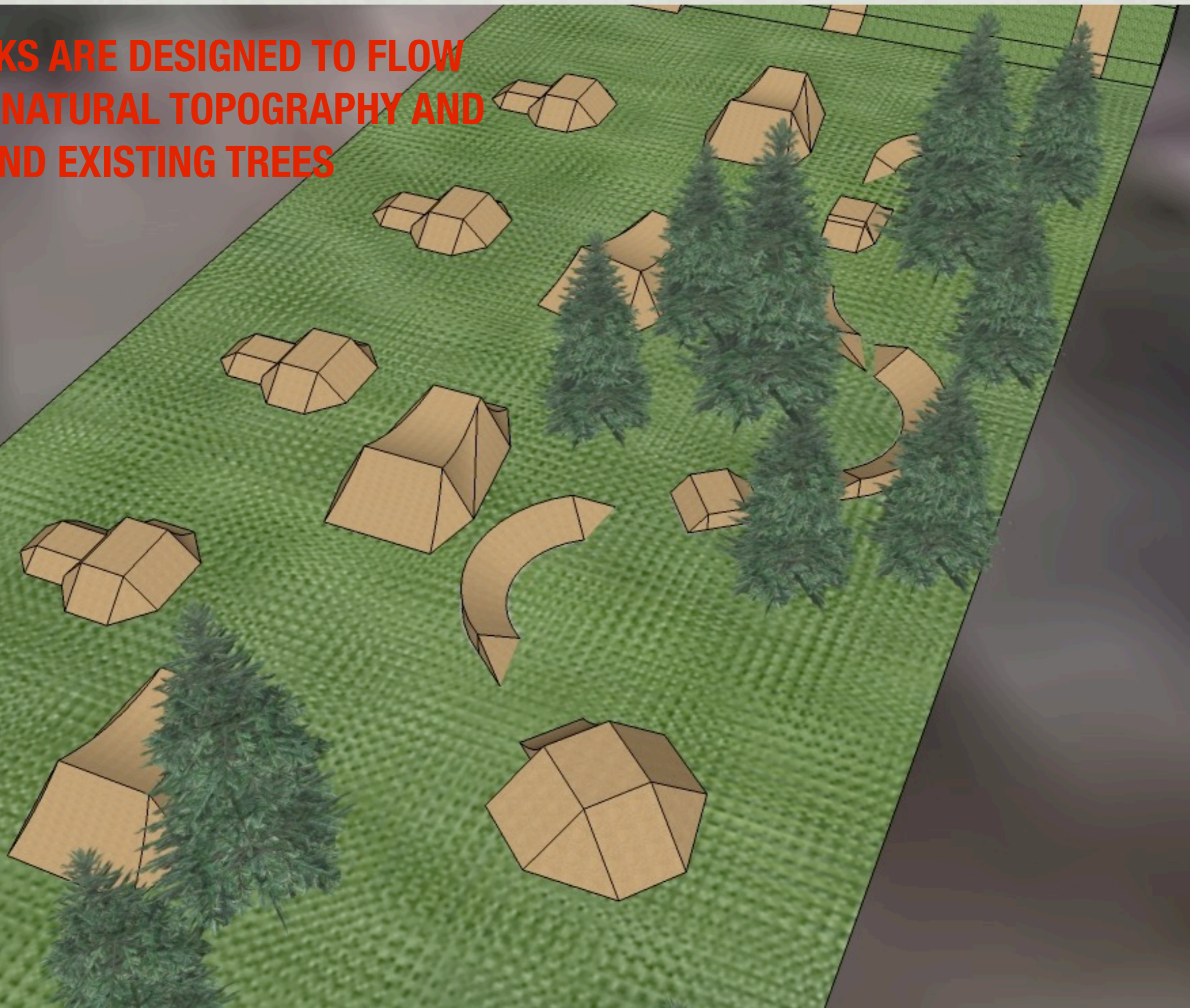
MEDIUM JUMPS:
9' X 4'
SLIGHTLY RADIUSED LIP
FLAT LANDING

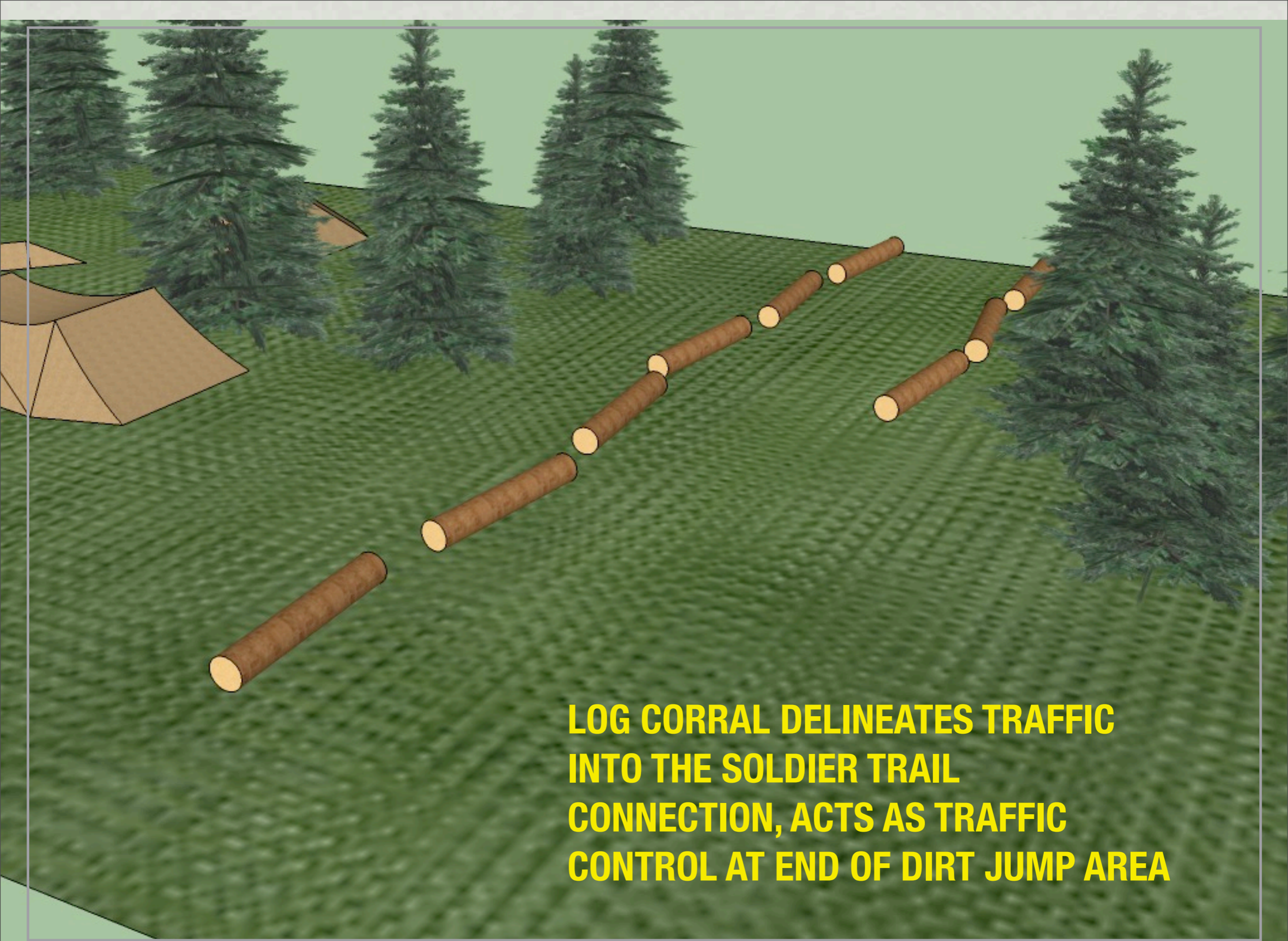
SMALL JUMPS:
5' X 2'
FLAT LIP AND LANDING



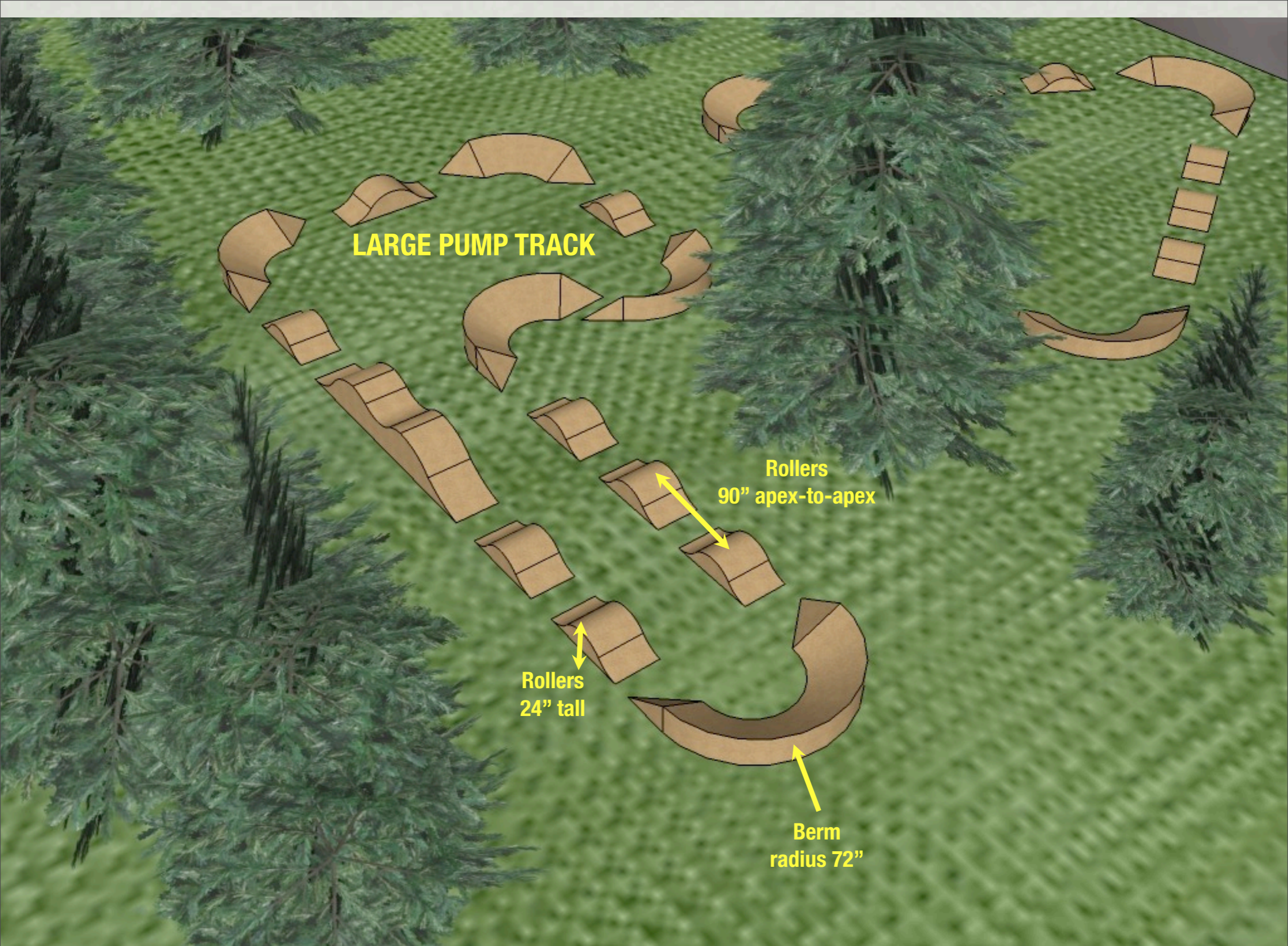
- PLANNED LINES
- FUTURE/TRANSFER LINES

**TRACKS ARE DESIGNED TO FLOW
WITH NATURAL TOPOGRAPHY AND
AROUND EXISTING TREES**





LOG CORRAL DELINEATES TRAFFIC INTO THE SOLDIER TRAIL CONNECTION, ACTS AS TRAFFIC CONTROL AT END OF DIRT JUMP AREA



LARGE PUMP TRACK

**Rollers
90" apex-to-apex**

**Rollers
24" tall**

**Berm
radius 72"**

SMALL PUMP TRACK

Rollers
84" apex-to-apex

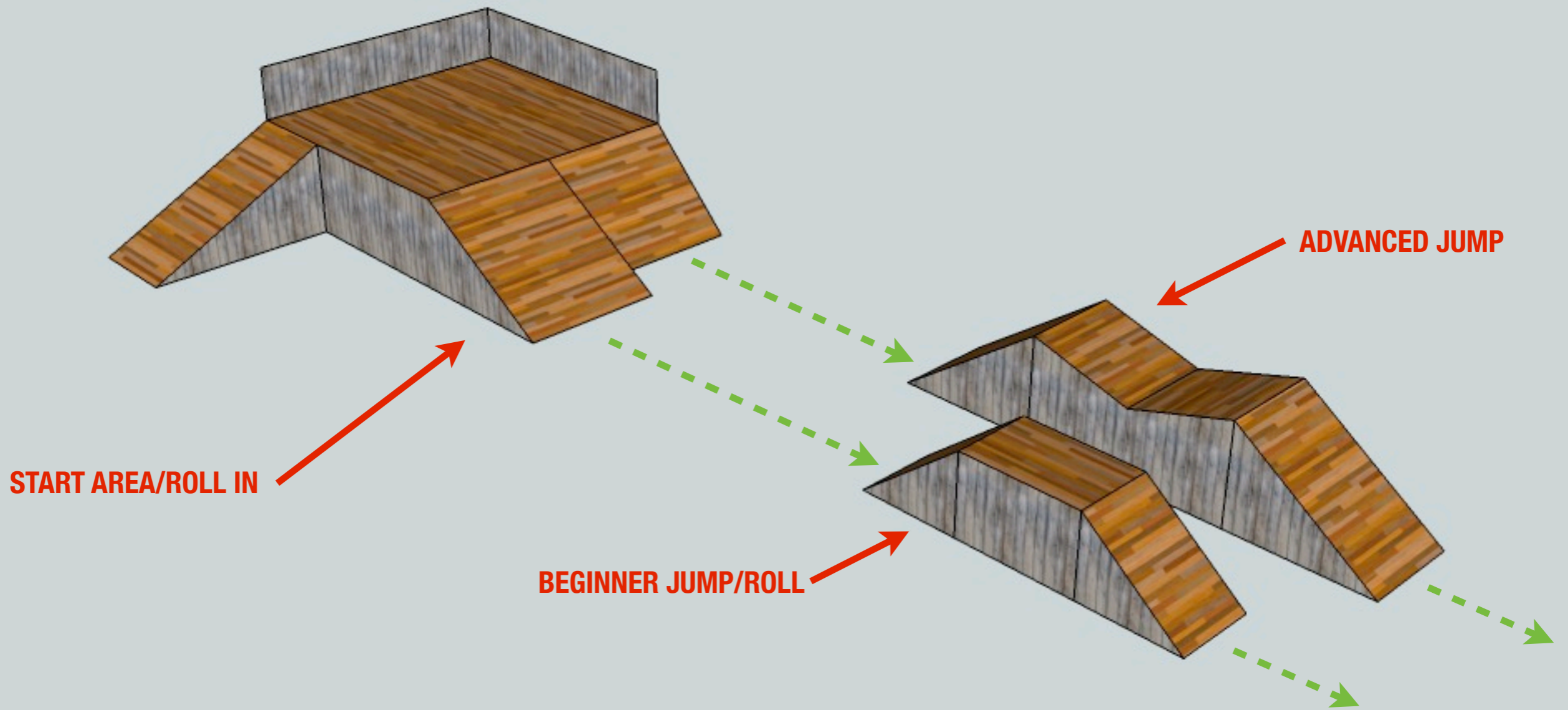
Rollers
12" tall

**PUMP TRACKS ALSO ALLOW FOR
FUTURE EXPANSION, AS WELL AS
TRANSFER SECTIONS, CREATING
MANY UNIQUE LAP COMBINATIONS**

**SKILLS AREA INCORPORATES
NATURAL FEATURES AND SPLIT
LOGS, FOCUS ON BALANCE**



POSSIBLE ADVANCED WOODEN SKILLS AREA FEATURES



Site Requirements

- * South-eastern section of site needs to be graded to ensure proper water drainage.
- * The existing connection to Soldier/Bridge trails will be maintained, and properly signed. This trail alignment will divide the bike park into two sections.
- * The number of existing trees removed will be kept to an absolute minimum. After construction, more trees could be planted for shade and aesthetics.

Bill of Materials

- ✱ Large native rocks and deadfall logs for skills area
- ✱ Some treated lumber for ladder bridges
- ✱ Several loads of high-quality soil for pump tracks and jumps; loam with moderate clay content
- ✱ Signs to denote bike park rules, features and difficulty, and connection to Soldier/Bridge trail
- ✱ Signs will be in the 'Ski Area' style of Green Circle, Blue Square, and Black Diamond
- ✱ Access to water for jump construction

Bike Park Rules

- * **These are examples of rules found at similar parks, and recommended by the International Mountain Bike Association**
- * Trails and features in this area could be dangerous
- * This is a high-risk sport and accidents could result in injury.
- * Do not ride in this area or attempt any of the jumps unless you are a skilled rider on the proper equipment
- * Inspect features before using and assess against your skills
- * A helmet is **REQUIRED** to ride in this area, a full-face helmet is recommended
- * By entering this area you agree to the above rules

Labor and Costs

- Flagstaff Biking Organization will assist with volunteer labor to plan, build, and maintain the skills park.
- Fundraising will be a collaborative effort between FBO and Coconino County, with emphasis placed on securing funds from bike industry companies
- Coconino County Parks and Rec will be ultimately responsible for liability and materials.